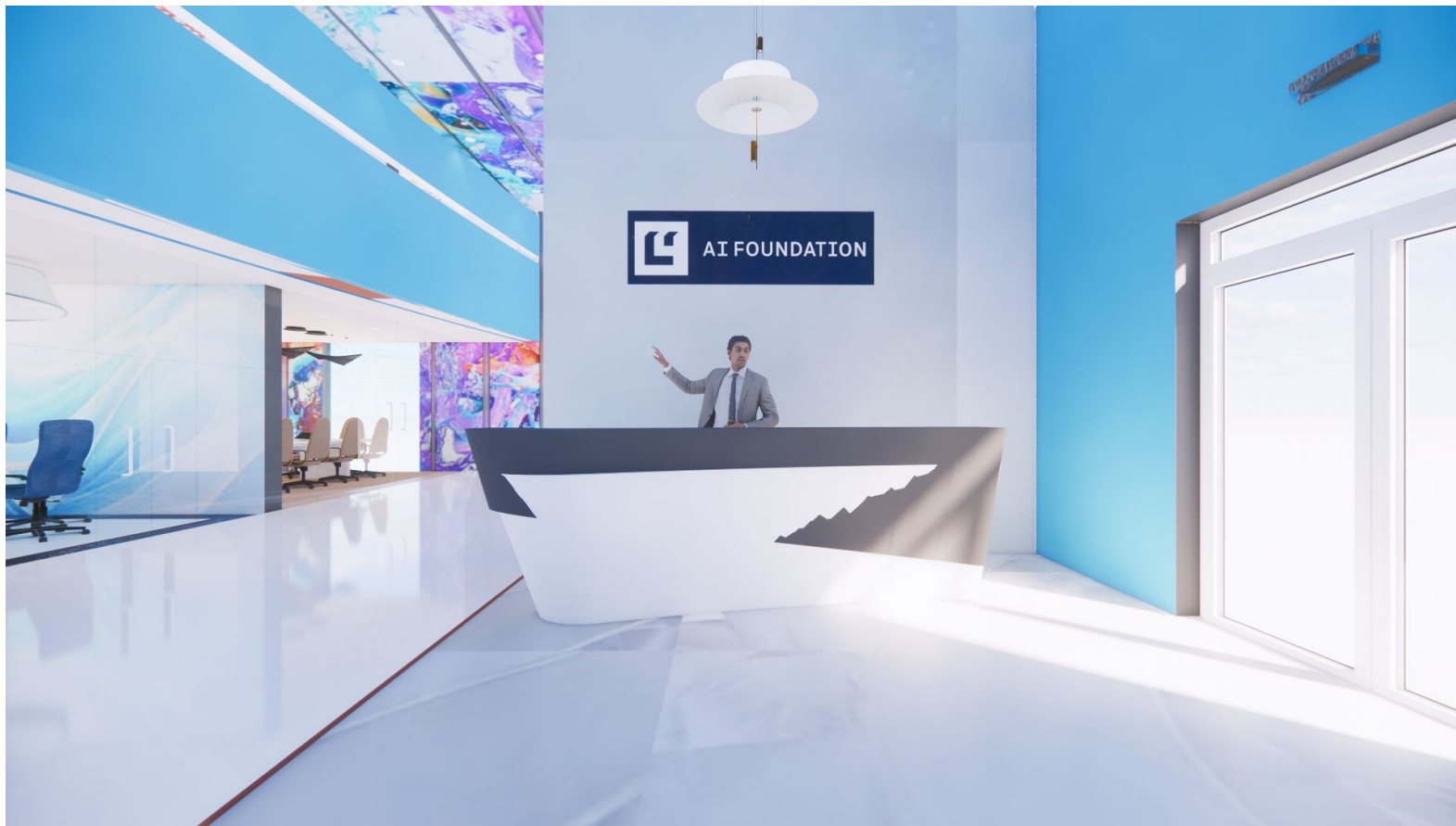




Interior Design Portfolio 2024

Jacquelyn P Parker



AAI 374 | Spring 2023 | FINAL PRESENTATION | Jacquelyn P Parker | Professor Nowak | Scale $\frac{1}{8} = 1'$



AAI 374 | Spring 2023 | FINAL PRESENTATION | Jacquelyn P Parker | Professor Nowak | Scale 1/8" = 1'



AAI 374 | Spring 2023 | FINAL PRESENTATION | Jacquelyn P Parker | Professor Nowak Scale $\frac{1}{8} = 1'$



AAI 374 | Spring 2023 | FINAL PRESENTATION | Jacquelyn P Parker | Professor Nowak | Scale 1/8" = 1'



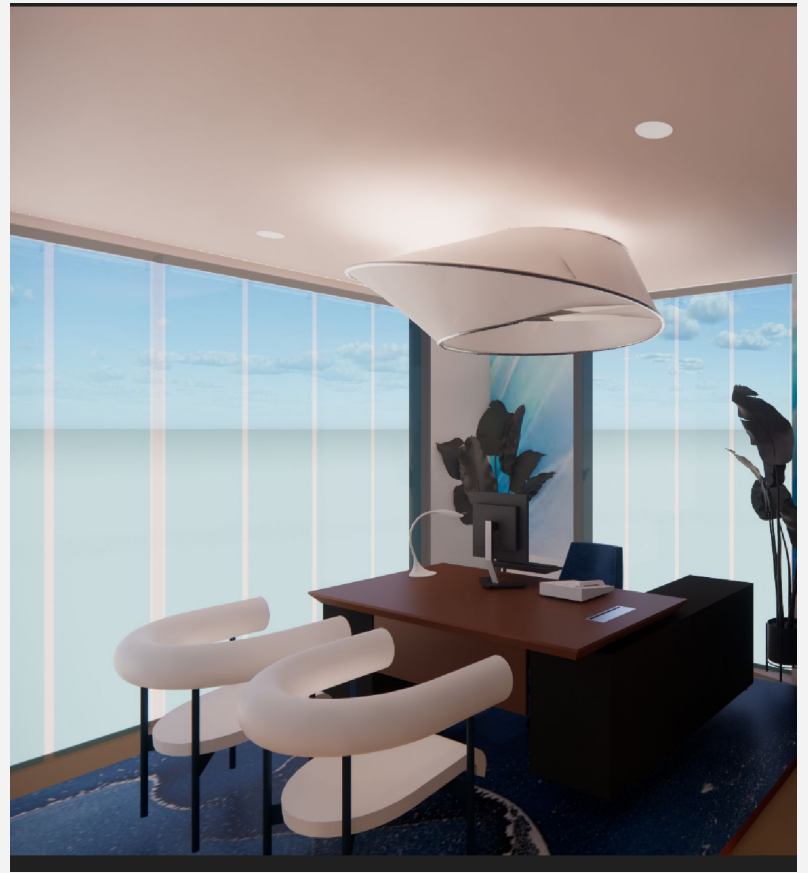
One office, and
three ways:
How 3 distinct
looks
completely
transformed this
one office space.



Conference Room



AAI374|Spring 2023|FINAL PRESENTATION | Jacquelyn P Parker|Professor Nowak|Scale 1/8" = 1'



Mandalay Bay HD Expo 2023 Exhibit

AAI 374 | Spring 2023 | FINAL PRESENTATION | Jacquelyn P Parker | Professor Nowak | Scale $\frac{1}{8} = 1'$

MANDALAY BAY HD EXPO 2023



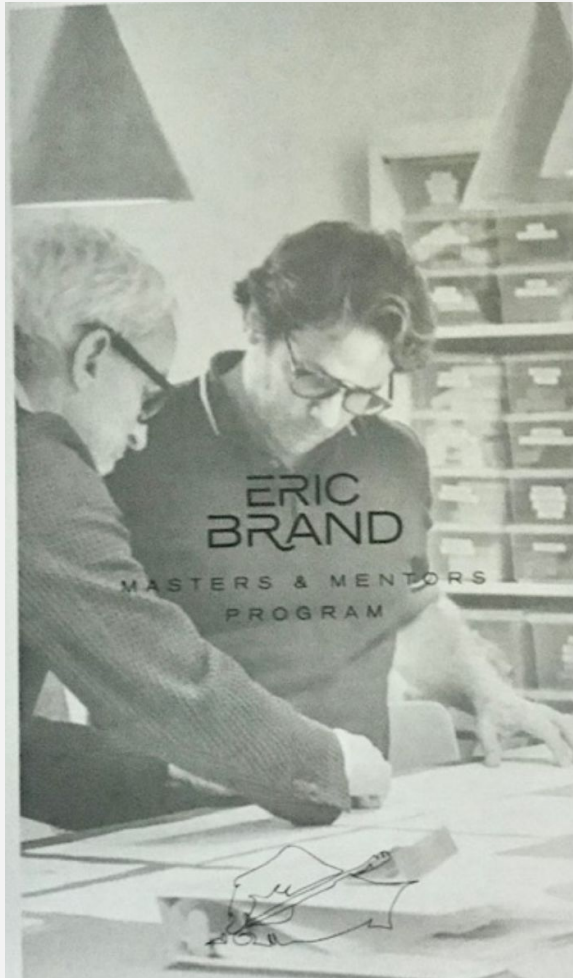
UNLV
SCHOOL OF
ARCHITECTURE

JACQUELYN P PARKER
INTERIOR DESIGN, 3RD YEAR



MANDALAY BAY HD EXPO 2023

ERIC BRAND PRESENTS SPOTLIGHT ON INTERIOR DESIGN CLASS OF 2023 DESIGNS



STUDENT SPOTLIGHT showcasing at HD Vegas 2023



Jacquelyn P Parker
Interior Design, 3rd Year
"Luxury" Workplace Design

Project Description:
This luxury workplace was designed and created for AI FOUNDATION. The focus is space design conducive to creative ways of communicating on different software platforms.



Samantha Carter
Interior Design, 3rd Year
Hospitality in "Luxury" Corporate Office

Project Description:
A "luxury" corporate office designed for Panasonic's consumer electronics team. The "reset" space aligns with Panasonic's primary goal of improving day-to-day lives. The design of this office is meant to help employees relax during their workday, reduce stress and give every day a sense of purpose.



Stephanie Otero
Interior Architecture and Design, 3rd year
Peerless Av - Luxury Workspace

Project Description:
This is a Luxury Workspace project for Peerless AV. The design was inspired by a virtual reality experience and translated into a parametric wood curve design that replicated organic curves in order to create an illusion and adhere to the company's product in order to introduce technology.

Studio Projects

Project 1

Rehabilitation Counsel Center for clients with OPIOID and Alcohol Dependency

Project 2

Rehabilitation Cottage for Existing Residents



FRONT VIEW OF COUNSELING CENTER



WAITING AREA



RECEPTION AREA & ADDITIONAL SEATING



ADDITIONAL SEATING BETWEEN OFFICE AND RESTROOM



LADIES RESTROOM



FAMILY WAITING AREA



REAR OF COUNSELING CENTER



REVIVE HAVEN COUNSELING CENTER

REVIVE HAVEN counseling center is designed based on Russell's theory of three emotional responses to an environment. This design effectively coordinates space to support the well-being of its clients. Large meeting rooms, comfortable seating, safe furniture, large windows that bring in sunlight, and natural calm colors are provided to promote a sense of calmness and relaxation. Russell concluded that emotions are the link between aspects of our feelings and our environment.



1/8" - 1' - 0"